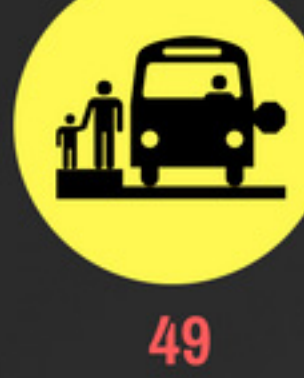


BUS ACCIDENTS

THE FACTS

In 2015, **295** deaths occurred as a result of bus crashes.



49

of which were bus occupants.



24,000

people were injured.



62%

were from front end impacts.

Fatal Bus Accidents Between 2005 - 2015:

41%

were school buses.

3%

were transit buses.

13%

were intercity buses.

Overall, between 2006 – 2015:

1,313 were people killed in school bus crashes.

301 were school-age children.

33%

5-7 years old.

34%

8-13 years old.

4 COMMON REASONS FOR BUS ACCIDENTS



Aggressive Driver.



Driver Incompetence.



Poor Bus Maintenance.



Driver fatigue.

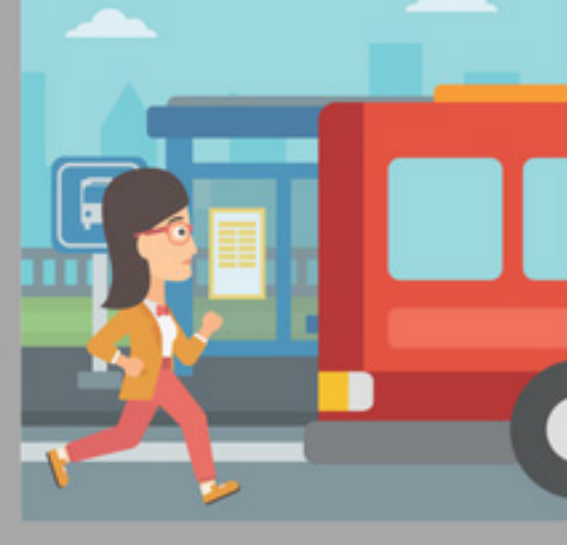
BUS SAFETY TIPS

When Boarding the Bus

Stand back and away from the curb.



Do not chase a moving bus once it has left the bus stop.



Approach the bus when it comes to a complete stop and the door is opened.



If you have a child, hold their hand as the bus approaches.



Safety Tips on the Bus

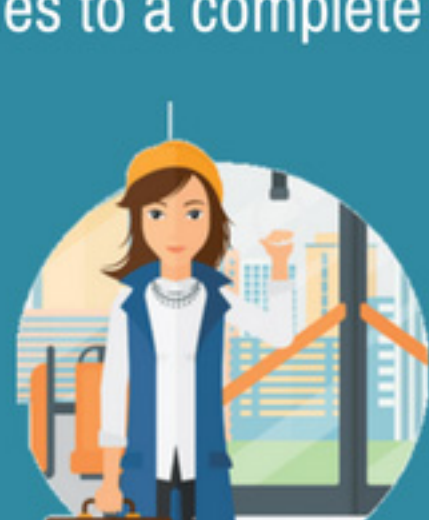
Do not distract driver.



If you must stand, use handrails.



Only get up from your seat when the bus comes to a complete standstill.



Do not put any body part out the window.



Getting Off the Bus

When exiting, use the handrails.



Only cross in front of a bus at a traffic stop and make sure the driver sees you.



When crossing in front of a bus, look out for sudden traffic changes.



Do not get near the wheels of a bus at any time.



Sources:

<https://www.injurylawyer.com/practice-areas/personal-injury/accidents/bus-accidents/>
<http://www.nsc.org/learn/safety-knowledge/Pages/news-and-resources-school-bus-safety-rules.aspx>
<https://crashstats.nhtsa.dot.gov/Api/Public/ViewPublication/812384>
<https://crashstats.nhtsa.dot.gov/Api/Public/ViewPublication/812366>
<https://www.fmcsa.dot.gov/sites/fmcsa.dot.gov/files/docs/safety/data-and-statistics/Large-Truck-and-Bus-Crash-Facts-2015.pdf>
<https://www.metrotransit.org/bus-safety>



THE
ROTHENBERG
LAW FIRM LLP
A PROUD HISTORY OF SUCCESS

800-624-8888

InjuryLawyer.com