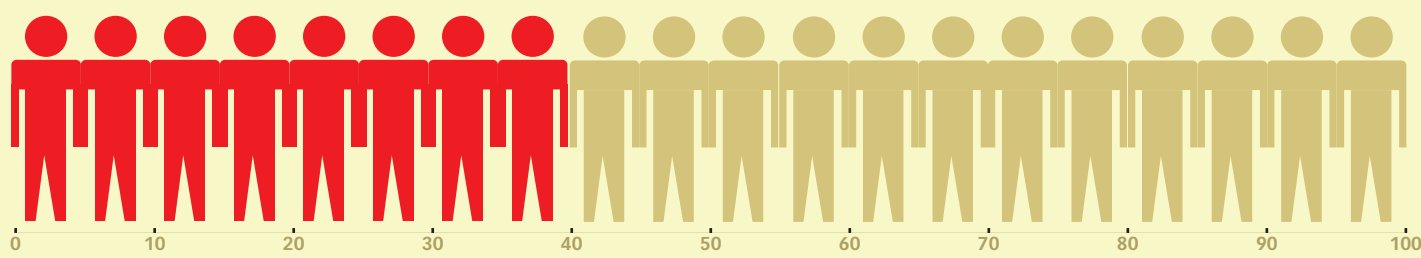




Myths.
Facts.
Tips.

SUV MYTH

About **40%** of Americans admit to believing that SUVs are safer than regular cars.

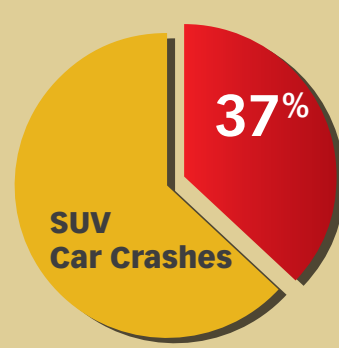
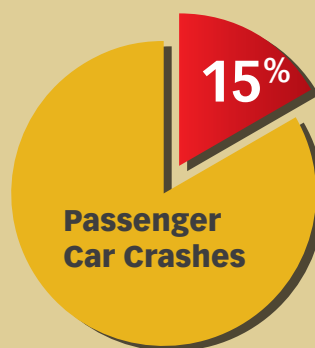


SUV CAR ACCIDENT FACTS

1

SUVs **rollover** far more often than other vehicles

SUV crashes: **37%** are rollovers
Passenger Car crashes: **15%** are rollovers



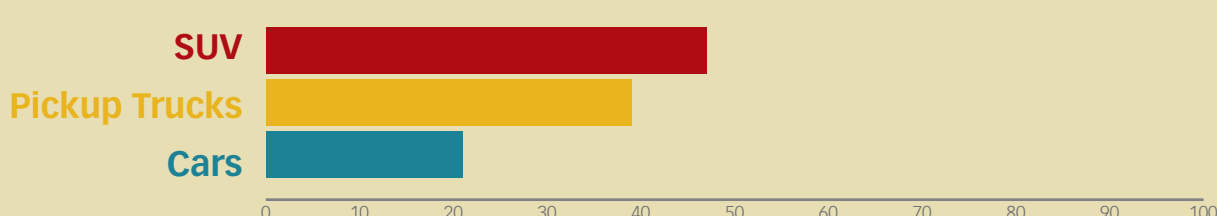
2

SUVs have the highest **occupant fatality rate** of any other vehicle in rollover crashes

More than **10,000** people are killed in SUV accidents each year.

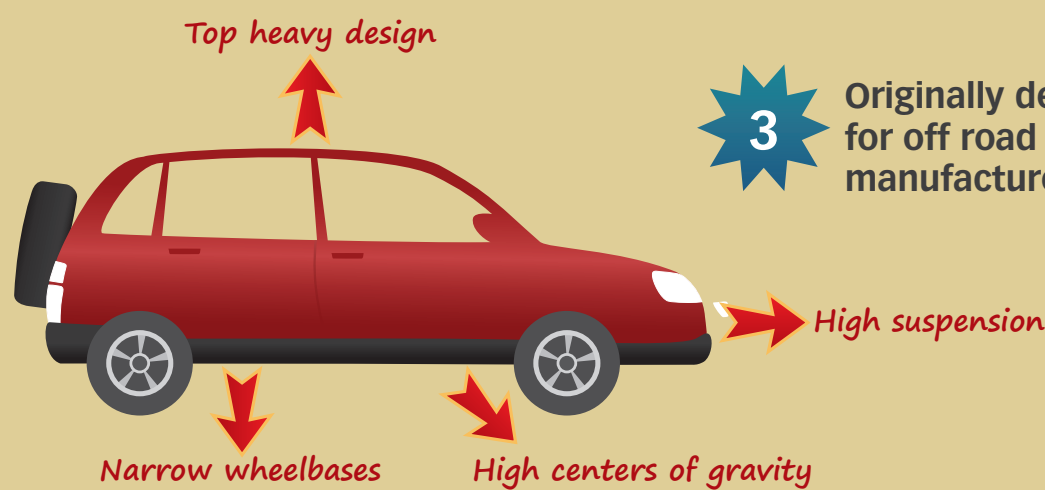


Driver deaths in single-vehicle rollover crashes in 2006



3

Originally designed and marketed for off road use, certain SUVs were manufactured with **various flaws**.



TIPS TO AVOID A ROLLOVER

Common sense and **routine maintenance** can greatly increase your odds of avoiding a rollover and walking away from one if it happens.

Check the tires



Make sure they are in good shape and properly inflated to the pressure recommended by the vehicle manufacturer. Check the inflation pressure at least once a month. Replacement tires should be similar to the vehicle's original set.

Safety belts



Safety belts help keep you in the seat so you are not tossed around in a rollover crash. About half of rollover fatalities occur when people are partly or completely ejected from the vehicle.

Don't overload



Overloading any vehicle, particularly SUVs and pickups, decreases its stability. The worst practice is to place heavy loads on the roof.

Slow Down



Speed makes a vehicle's tendency to roll over more severe, and it also makes more demands on a driver's attention and skill.

If you or a loved one has suffered an injury in a SUV or 4x4 rollover accident, call The Rothenberg Law Firm LLP at 1-800-624-8888.

Sources:

*Federal Consumer Protection Safety Commission (CPSC)
*National Highway Traffic Safety Administration (NHTSA)
*Insurance Information Institute
*Governor's Office of Consumer Protection



THE
ROTHENBERG
LAW FIRM LLP
A PROUD HISTORY OF SUCCESS

800-624-8888

InjuryLawyer.com